

Acuity F: Overview

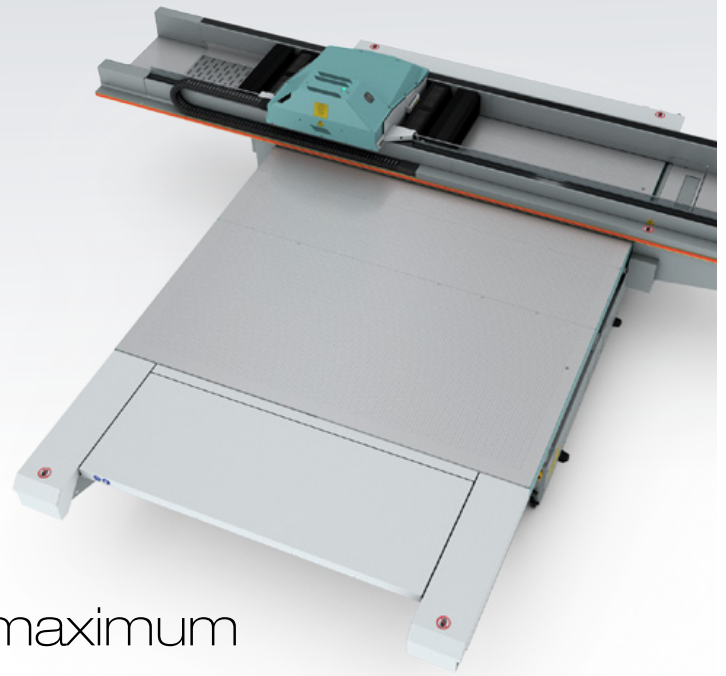
High quality, efficient flatbed production

Acuity F is built to deliver outstanding image quality with high productivity. It is ideal for businesses looking to grow their flatbed capability, take on higher volumes or turn jobs around quicker, and has the potential for excellent return on investment. Print on many types of rigid and flexible materials to produce a wide variety of applications.

Key features

- ▶ Dedicated flatbed design
- ▶ High resolution greyscale printheads
- ▶ Large 3.05 x 2.5m bed size
- ▶ Up to 155m²/hr print speed
- ▶ Registration pins
- ▶ Dual zone printing
- ▶ 7 vacuum zones
- ▶ Low heat-output UV
- ▶ Fujifilm Uvijet UV curing inks
- ▶ 6 and 7 colour channel options
- ▶ Light inks as standard
- ▶ White ink option
- ▶ Automatic head cleaning





Produce print with maximum efficiency

A secure investment in proven technology

The Acuity flatbed platform has been the industry benchmark since 2007 with thousands of machines installed worldwide. The Acuity F combines years of market leading image quality with leading edge engineering and ink technology to deliver a state-of-the-art platform capable of a wide range of print applications.

Fast turnarounds, higher volumes

Print companies who need a quick turnaround or are producing higher volumes of print will want to eliminate finishing processes like mounting and laminating. Acuity F is engineered for high speed printing direct to rigid sheets without compromising on print quality. It offers a production potential of 30,000m² per year.

Built for production efficiency

Acuity F can print almost 200 boards (1.25 x 2.5m) in an 8 hour shift. To enable the operator to work productively with the machine, its design and features are optimised for efficient handling, workflow and maintenance.

Reliable production

Acuity F is built for the rigours of continuous print production. Through an excellent global service infrastructure, Fujifilm provides world-class support before, during and after installation.



High quality rigid printing at speed

Dedicated vacuum flatbed

A full-size (2.5 x 3.0m) dedicated flatbed table and powerful vacuum system holds sheet materials flat and secure. This enables edge-to-edge printing, printing over the same sheet multiple times with perfect registration, accurate double-sided printing, and perfect image geometry.

Precision drop placement

Acuity F produces exceptional image quality at print speeds of up to 155m²/hr with consistent, pin-point ink drop placement accuracy across the whole sheet. The print carriage contains up to 42 greyscale printheads and weighs over 90kg. The carriage runs on air bearings over a glass plate surface that enables it to move smoothly and precisely at a constant distance close to the print surface. Dynamic drop placement control actively compensates for micro-level unevenness across the bed surface.

Uvijet UV ink technology

Fujifilm's Uvijet ink delivers strong, vibrant, light-fast colours with superior colour gamut. With variable drop-size printheads and highly pigmented inks, Acuity F printers lay down a thin ink film to minimise production costs.

Wide application range

Print on PVC, polycarbonate, styrene, acrylic, paper, board, wood, aluminium composite and many other materials.

Smooth skin tones and vignettes

Acuity F is equipped with light magenta and cyan inks as standard to produce consistent, high quality images at high production speeds. Light inks also enhance colour reproduction, producing smooth tonal images like skin tones, vignettes and lighter solid colours.

Extended applications with white ink

A white ink channel is available on the 7 channel model. A high opacity white ink makes it possible to print on clear and non-white materials, extending the range of applications that can be produced.

Built for production efficiency

No downtime during media changeover

Acuity F can run in a continuous production mode, with the carriage printing at one end of the table while the operator unloads and loads sheets at the other.

Powerful vacuum

A high initial draw down ensures that slightly irregular sheets are pulled down perfectly flat to the bed surface. Adjustable vacuum strength provides optimum handling for different sheet materials, including irregular shapes, heavy, smooth or pre-cut sheets.

Reduced bed masking

Seven vacuum zones, including one central zone, are tailored to common media sizes to reduce the amount of bed masking required.

Accurate sheet registration

For fast loading and accurate positioning of sheets, Acuity F is equipped with two sets of pneumatic registration pins. Repeatable accurate positioning also makes it possible to print double-sided sheets in perfect registration, or even produce large scale images tiled over multiple boards.

Automatic maintenance

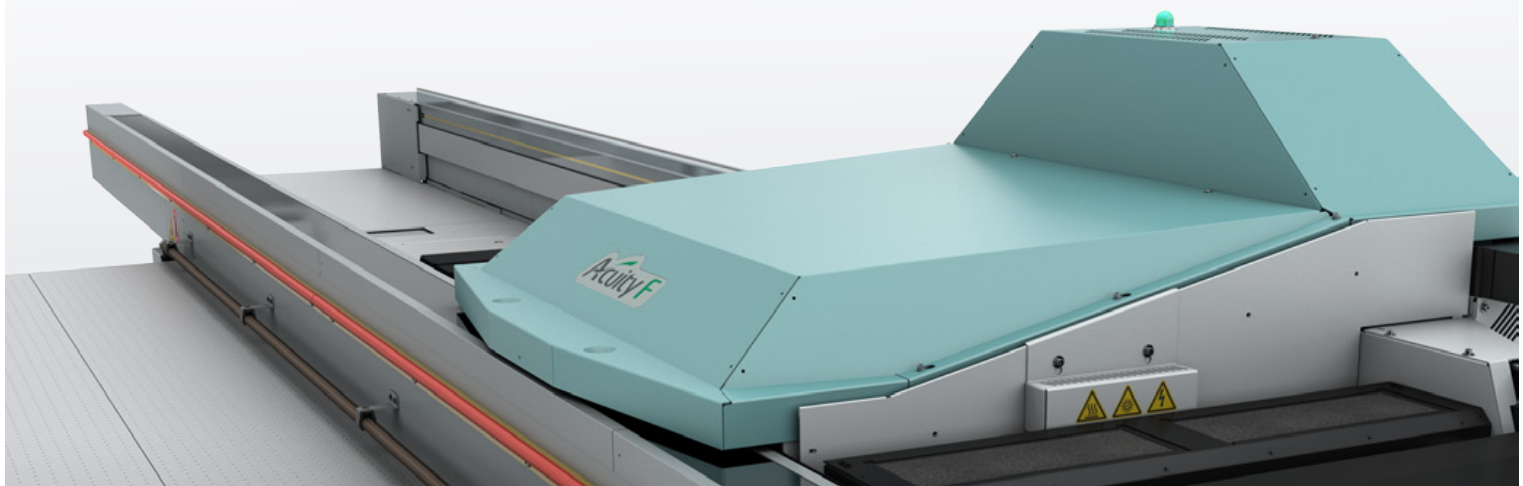
Acuity F takes care of the 27,000 inkjet nozzles through its Automatic Maintenance System. This reduces the amount of manual cleaning required and the automatic process is clean and more consistent.

Productivity enhancing software

Acuity F incorporates a variety of built in features that provide production flexibility even after jobs have been processed by the RIP. For example, a collation printing mode enables long print runs to be produced in an order that is convenient for post finishing or shipping, so prints don't have to be sorted manually.

Simple operation

The control station software is optimised for ease of use and guides an operator through job setup step-by-step. Even routine maintenance procedures are guided by the control software.



Technical specification

Acuity F		F66	F67
Rigid media	Max size	3.05 x 2.50m	
	Max thickness	50.8mm	
	Max print area	3.06 x 2.51m	
	Max weight	34kg/m ²	
Ink	Type	Fujifilm Uvijet WI and WH ink series	
	Package	2 litre pouch (cyan, magenta, yellow, black, light cyan, light magenta, white)	
	Configuration	6 channel CMYKLcLm	7 channel CMYKLcLm + white
Printheads		Toshiba Tec CE2 greyscale, variable drop 6-42pl	
Connectivity		10/100/1000 Base-T	
RIP recommendation		Caldera V10 ColorGATE Production Suite 9	
Operating environment		18-30°C, 30-70% RH non-condensing, 5-10 air changes per hour	
Compressed air (supplied by customer)		Pressure max 120psi / 867kPa Peak flow 12ft ³ /m at 100 psi or 340ltr/m at 690kPa Continuous flow 1ft ³ at 100 psi or 28ltr/m at 690kPa	
Power requirements		3 phase, 200-240 VAC 50/60Hz 30A, 9.6kW	
Dimensions (W x L x H)		5.72 x 4.82 x 1.48m	
Weight		1,815kg	

Print modes and speeds

Mode	F66 - m ² /hr	F67 - m ² /hr
Express	155	
Production	100	
Production Matte	72	
Quality	72	
Quality Matte	51	
Quality Density	40	
Quality Smooth	40	
White 2 Layer	-	36
White 3 Layer	-	24

For further information:

Please contact your local Fujifilm partner.

web www.fujifilm.eu/print **YouTube** [Fujifilm Print](#) **Twitter** [@FujifilmPrint](#)

Specifications are subject to change without notice. The name FUJIFILM and the FUJIFILM logo are trademarks of FUJIFILM Corporation. All other trademarks shown are trademarks of their respective owners. All rights reserved. E&OE.